



GRES PORCELAIN COLLECTION

www.rrpil.com

GLOBAL COLLECTION



Registered Office: 7th Floor, Windsor, C.S.T. Road, Kalina, Santacruz (E), Mumbai - 400 098, Maharashtra, India.

Liaison Office: 242, 8-A, National Highway, Dhruva, Morbi - 363 621, Gujarat, India.

Contact: +91 22 4086 7600 / 700

E-mail: info@rrpil.com

Website: www.rrpil.com

MASTER CATALOGUE_VAMIL_RRPIL_2023



LEADERSHIP IS AN **ACTION**,
NOT A POSITION.



ABOUT US

RMC Readymix Porselano (India) Limited (RRPIL) is one of the fastest growing building materials global supply partners headquartered in (India) that specialises in the production of Tiles and Bath ware. It is a part of (India's) leading integrated building material conglomerate with a presence of more than six decades.

The parent company is well-known for its extensive and innovative solutions in Cement, Ready-mix Concrete, Tiles, Sanitaryware & faucets, Adhesives etc. With an annual turnover of >70 million USD, the company has a significant market share in the building material segment. The business focuses on customer delight and aims to add more value by offering high-quality goods and services, as well as by developing innovative methods to enhance manufacturing competency and introducing cutting-edge technology.

OUR CERTIFICATIONS

- CERTIFICATION OF CONFORMITY.
- ISO 14001:2015
- ISO 9001:2015





“
VAMIL
beautiful
 as
Nature
 ”



Icons

TYOLOGY

| | | | | |
|--|--|-----------------------------------|--------------------------|--------------------------|
| G/P GLAZED PORCELAIN TILES Bla | U/P UNGLAZED PORCELAIN TILES Bla | Gr/P GRES PORCELAIN Bib | C CERAMIC BIIa | C CERAMIC BIII |
|--|--|-----------------------------------|--------------------------|--------------------------|

EDGE

| | |
|------------------|-----------------|
| RECTIFIED | STRAIGHT |
|------------------|-----------------|

SURFACE STRUCTURE

| | | |
|-----------------|---------------------------|---------------------------|
| S SMOOTH | LS LIGHT STRUCTURE | HS HEAVY STRUCTURE |
|-----------------|---------------------------|---------------------------|

FINISH

| | | | | |
|------------------|------------------|------------------------|-------------------|----------------|
| N NATURAL | L LAPPATO | FL FULL LAPPATO | P POLISHED | H HONED |
|------------------|------------------|------------------------|-------------------|----------------|

SURFACE LOOK

| | | | |
|-------------------|-----------------------|---------------|----------------|
| C CARVING | RUSTIC | M MATT | S SATIN |
| P POLISHED | HG HIGH GLOSSY | | |

COLOUR VARIATIONS

| | | | |
|----------------|-----------------|------------------|------------------|
| V1 EVEN | V2 LIGHT | V3 MEDIUM | V4 STRONG |
|----------------|-----------------|------------------|------------------|

INDICATIONS FOR USE

| | |
|-------------------|--------------------|
| WALL TILES | FLOOR TILES |
|-------------------|--------------------|

SUGGESTED APPLICATIONS

| | | | |
|-------------------------|--------------------------------------|----------------|--------------------------------------|
| DOMESTIC PURPOSE | LIGHT COMMERCIAL TRAFFIC AREA | OUTDOOR | HEAVY COMMERCIAL TRAFFIC AREA |
|-------------------------|--------------------------------------|----------------|--------------------------------------|



GRES PORCELAIN



LET'S FEEL
BEAUTY
of Earth



GRES PORCELAIN

TILE SIZE

PG NO.

60X120 CM

05

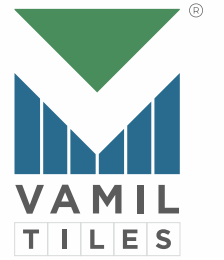
60X60 CM

13

20X100 CM

19

GRES PORCELAIN
60 X 120 CM



ACOUSTIC BIANCO



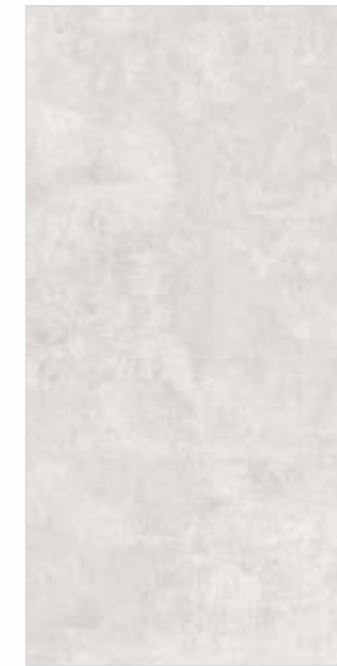
ACOUSTIC GREY



CAMPIN BEIGE



DELVER GREY



DELVER SILVER



FERROL BEIGE



CAMPIN CHOCO



DELVER CHOCO



DELVER CREMA



FERROL BROWN

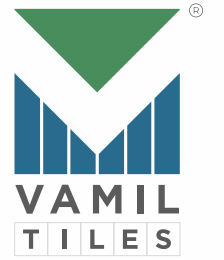


HAMPTON DECOR



HAMPTON VERDE

GRES PORCELAIN
60 X 120 CM



INDIANA SILVER



INDIANA DECOR



INDIANA GREY



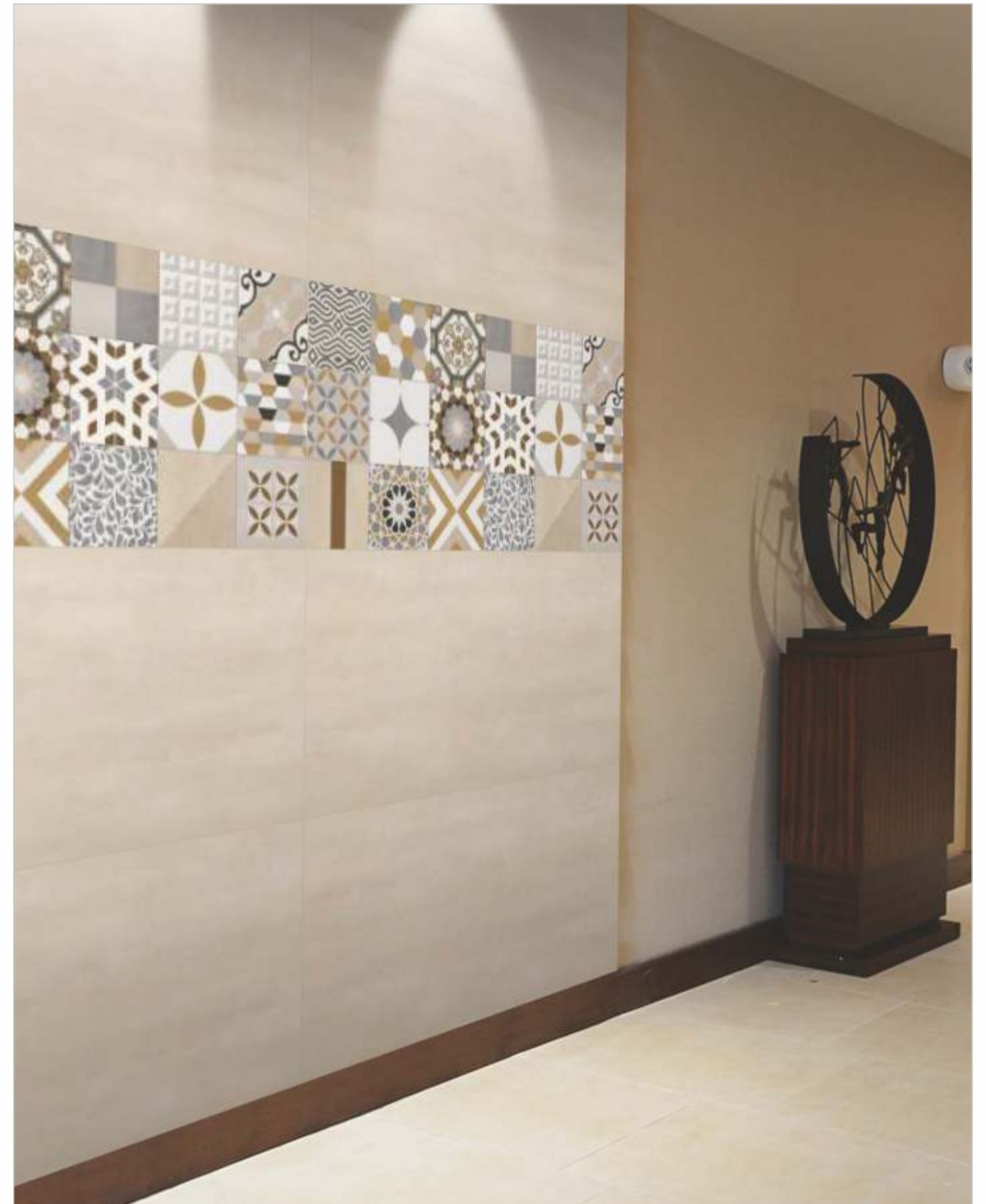
JUREL GREY



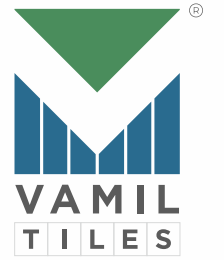
JUREL DECOR



JUREL BEIGE



GRES PORCELAIN
60 X 120 CM



ACIN TAUPE



ARIS STATUARIO



BENTYL GREY



SHIRE WHITE



VA BOSSET PEARL



VA CHURCHIL CREAMA



BERGO CREAMA



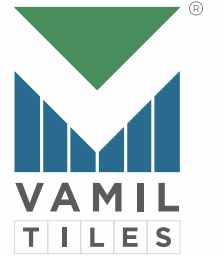
CONSE GREY



CONSE STEEL



GRES PORCELAIN
60 X 120 CM



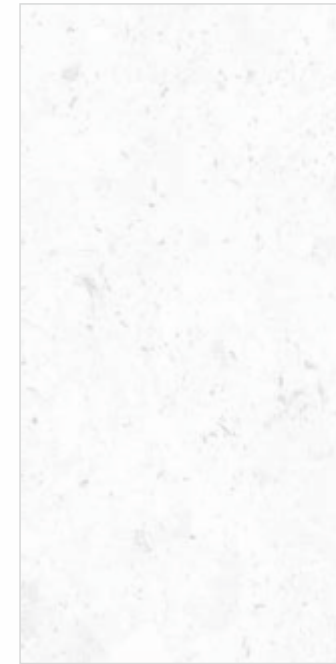
VA CUESTA GREY



VA DAZO BEIGE



VA GRESSO CREMA



VA HENRICH BIANCO

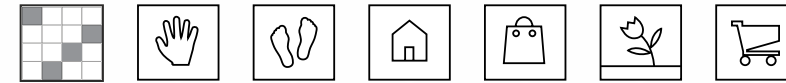


VA RENDERS MINT



VA TECTRIX GREEN





VAM 1103



VAM 1104



VAM 1107



VAM 5008



VAM 5009



VAM 5013



VAM 1114



VAM 4003



VAM 4004



VAM 5014



VAM 5015



VAM 5017



VAM 3020



VAM 3021



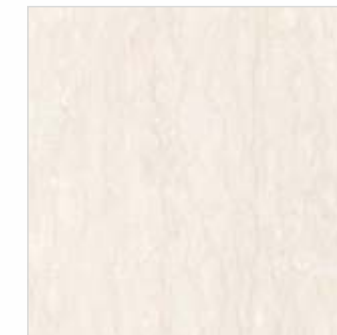
VAM 3022



VAM 6001



VAM 6005



VAM 7001



VAM 5004



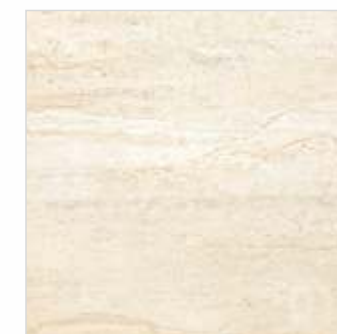
VAM 5005



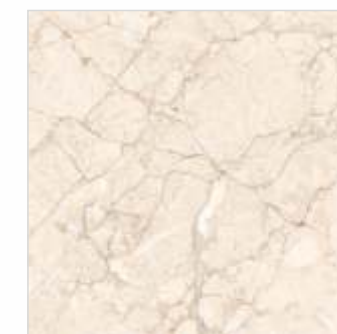
VAM 5006



VAM 7002

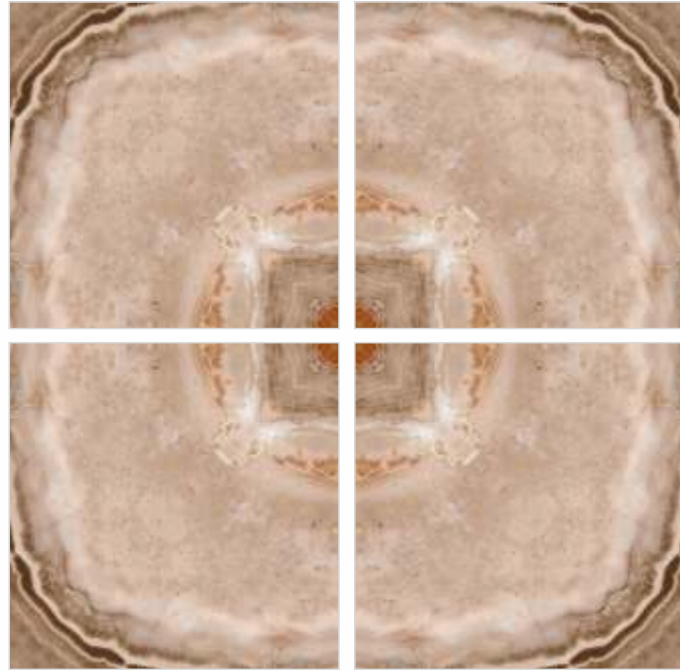
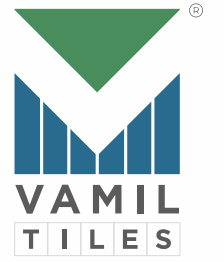


VAM 7003



VAM 7004

GRES PORCELAIN
60 X 60 CM



VAM 7008



VAM 7009



VAM 7030



*Mandatory to be fix with spacers only



VAM 7005



VAM 7022



VAM 7023



H 8002 VAM



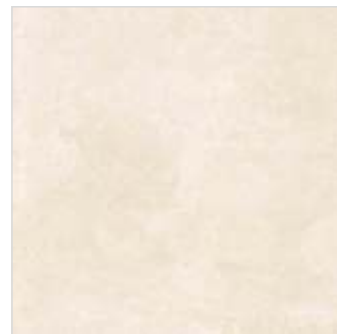
H 8003 VAM



H 8004 VAM



VAM 7024



VAM 7025



VAM 7026



VAM 7027



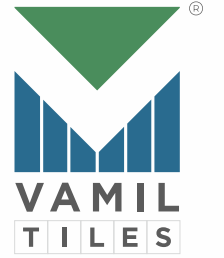
VAM 7028



VAM 7029



GRES PORCELAIN
20 X 100 CM



AXIS BROWN WOOD



BANER BEIGE WOOD



CAPTOR WINE WOOD



ETHER BEIGE WOOD



FELOR LATTE WOOD



GENZO COFFEE WOOD



HAMEL PEANUT WOOD



INCUS DRIFT WOOD



KENTON PECAN WOOD



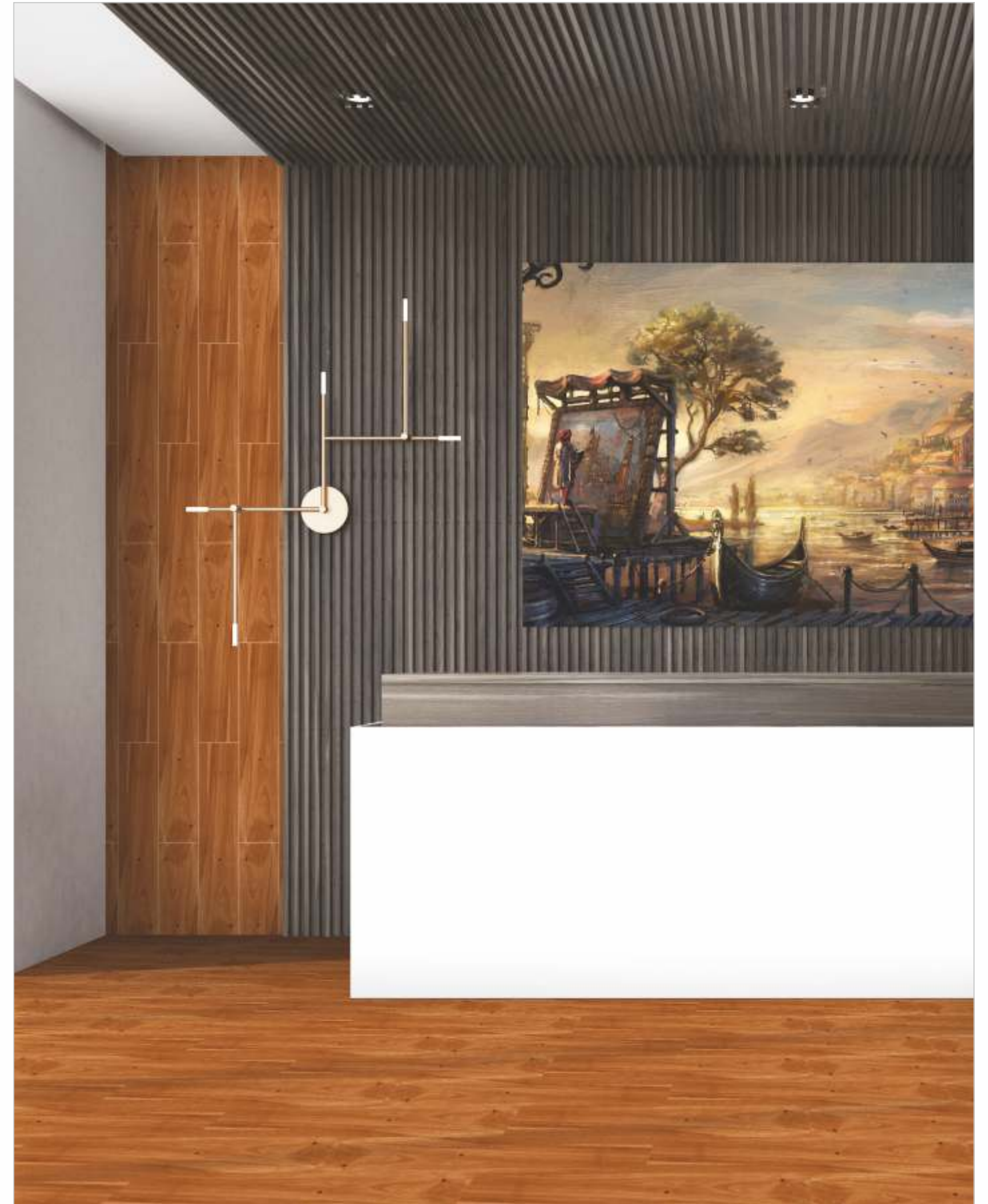
LAXALT CEDAR WOOD



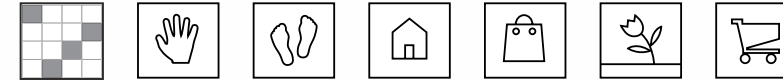
MAXINE TAWNY WOOD



NIKKEI BROWN WOOD



GRES PORCELAIN
20 X 100 CM



ONTOR COFFEE WOOD



PHUKET BROWN WOOD



RAZZLE FAWN WOOD



RELIANT BEIGE



RELIANT GREY



REMOR MOCHA WOOD



SEMONG GREY



SEMONG SMOKE



TEXAN GREY WOOD



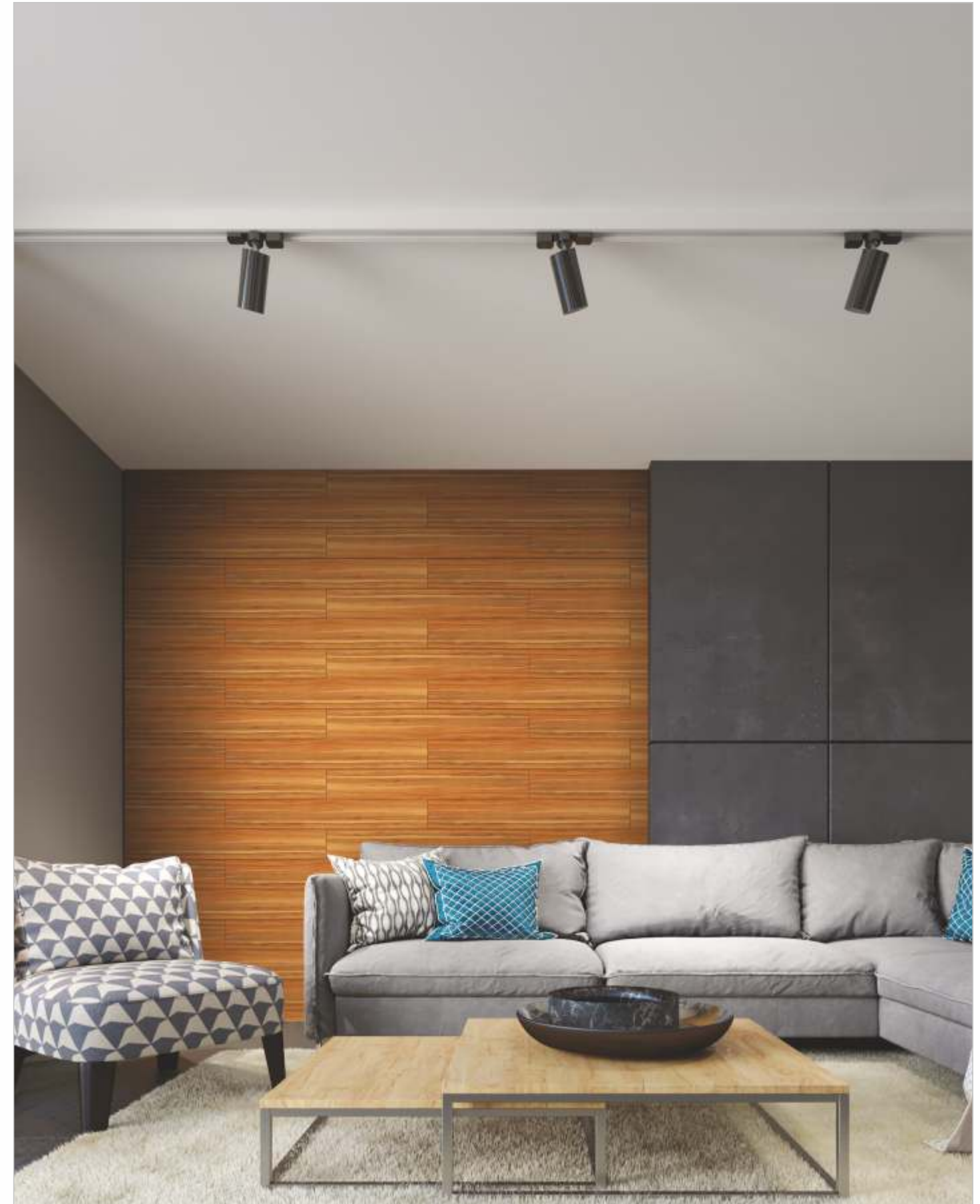
UNITAS CREMA



WENZEL GREY



WENZEL PEARL



TECHNICAL SPECIFICATIONS



TECHNICAL SPECIFICATIONS - GLAZED VITRIFIED TILES / GROUP B1a

| CHARACTERISTIC | TEST METHOD | INTERNATIONAL STD ISO 13006/EN 176 GROUP B1a | VAMIL VALUE |
|--|--------------|---|----------------------|
| DIMENSION & SURFACE QUALITY | | | |
| Deviation In Length | ISO-10545-2 | ±0.6% | ±0.2% |
| Deviation In Thickness | ISO-10545-2 | ±5% | ±3% |
| Straightness of Sides | ISO-10545-2 | ±0.5% | ±0.2% |
| Rectangularity | ISO-10545-2 | ±0.6% | ±0.2% |
| Surface Flatness | ISO-10545-2 | ±0.5% | ±0.2% |
| PHYSICAL & THERMAL PROPERTIES | | | |
| Water Absorption | ISO-10545-3 | <0.05% | <0.04% |
| Mohs Hardness | EN-101 | Min.5 | Min.5 |
| Flexural Strength | ISO-10545-4 | >35 N/mm ² | >40N/mm ² |
| Skid Resistance (Friction Coefficient) | ISO-10545-17 | >0.4 | >0.4 |
| Breaking Strength | ISO-10545-11 | >1113 N | >1800N |
| Frost Resistance | ISO-10545-12 | Frost Proof | Frost Proof |
| Thermal Shock Resistance | ISO-10545-9 | No Damage | No Damage |
| Moisture Expansion | ISO-10545-10 | NIL | NIL |
| Resistance to Surface Abrasion | ISO-10545-7 | Abrasion class shall be specified by the manufacturer | PEI III, IV & V |
| CHEMICAL PROPERTIES | | | |
| Chemical Resistance | ISO-10545-13 | No Damage | No Damage |
| Color Resistance | ISO-10545-16 | No Damage | No Damage |
| Stain Resistance | ISO-10545-14 | Resistant | Resistant |

PACKING DETAILS

| Dimension (CM) | BOX | | | | | |
|----------------|--------------|---------|----------|--------|----------------|-----------|
| | Pcs. per box | Sq. mtr | Sq. feet | Weight | Boxes / Pellet | Container |
| 120x240 CM | 1 | 2.88 | 31.00 | 60.00 | 37 | 6 |
| 120x180 CM | 2 | 4.32 | 46.50 | 87.00 | 27x9, 15x3 | 12 |
| 120x120 CM | 2 | 2.88 | 31.00 | 60.00 | 22 | 20 |
| 20x120 CM | 5 | 1.20 | 12.92 | 27.10 | 26 | 38 |
| 80x160 CM | 2 | 2.56 | 27.56 | 50.00 | 28 | 17 |
| 60x120 CM | 2 | 1.44 | 15.50 | 29.00 | 64x12, 30x6 | 18 |
| 60x60 CM | 4 | 1.44 | 15.50 | 26.50 | 40 | 25 |
| 30x30 CM | 8 | 0.72 | 7.75 | 14.40 | 96 | 19 |
| 120x180 CM | 2 | 4.32 | 46.50 | 87.00 | 27x9, 15x3 | 12 |
| 80x240 CM | 1 | 1.92 | 20.67 | 69.00 | 26 | 12 |
| 600x120 CM | 2 | 1.44 | 15.50 | 29.00 | 64x12, 30x6 | 18 |
| 60x60 CM | 4 | 1.44 | 15.50 | 26.50 | 40 | 25 |

G/P

U/P



TECHNICAL SPECIFICATIONS - CERAMIC TILES / GROUP B1a

| CHARACTERISTIC | TEST METHOD | INTERNATIONAL STD ISO 13006/EN 176 GROUP B1a | VAMIL VALUE |
|--|--------------|---|----------------------|
| DIMENSION & SURFACE QUALITY | | | |
| Deviation In Length | ISO-10545-2 | ±0.6% | ±0.2% |
| Deviation In Thickness | ISO-10545-2 | ±5% | ±3% |
| Straightness of Sides | ISO-10545-2 | ±0.5% | ±0.2% |
| Rectangularity | ISO-10545-2 | ±0.6% | ±0.2% |
| Surface Flatness | ISO-10545-2 | ±0.5% | ±0.2% |
| PHYSICAL & THERMAL PROPERTIES | | | |
| Water Absorption | ISO-10545-3 | 3% < E ≤ 6% | 4 - 5% |
| Mohs Hardness | EN-101 | Min.5 | Min.5 |
| Flexural Strength | ISO-10545-4 | >20 | >40N/mm ² |
| Skid Resistance (Friction Coefficient) | ISO-10545-17 | >0.4 | >0.4 |
| Breaking Strength | ISO-10545-11 | >1000 | >1000 |
| Frost Resistance | ISO-10545-12 | Frost Proof | Frost Proof |
| Thermal Shock Resistance | ISO-10545-9 | No Damage | No Damage |
| Moisture Expansion | ISO-10545-10 | NIL | NIL |
| Resistance to Surface Abrasion | ISO-10545-7 | Abrasion class shall be specified by the manufacturer | PEI III, IV & V |
| CHEMICAL PROPERTIES | | | |
| Chemical Resistance | ISO-10545-13 | No Damage | No Damage |
| Color Resistance | ISO-10545-16 | No Damage | No Damage |
| Stain Resistance | ISO-10545-14 | Resistant | Resistant |

PACKING DETAILS

| Dimension (CM) | BOX | | | | | |
|----------------|--------------|---------|----------|--------|----------------|-----------|
| | Pcs. per box | Sq. mtr | Sq. feet | Weight | Boxes / Pellet | Container |
| 60x60 CM | 4 | 1.44 | 15.50 | 26.50 | 40 | 25 |
| 20x60 CM | 6 | 0.72 | 7.75 | 12.00 | 96 | 24 |
| 30x60 CM | 5 | 0.90 | 9.69 | 13.00 | 96 | 21 |
| 30x45 CM | 6 | 0.81 | 8.72 | 11.00 | 120 | 20 |
| 30x30 CM | 9 | 0.81 | 8.72 | 11.00 | 120 | 20 |
| 10x20 CM | 50 | 1.00 | 10.76 | 12.60 | 90 | 24 |
| 7.5x30 CM | 44 | 0.99 | 10.66 | 13.20 | 81 | 24 |

